

DNA Ladder (100-5000bp)

D745354

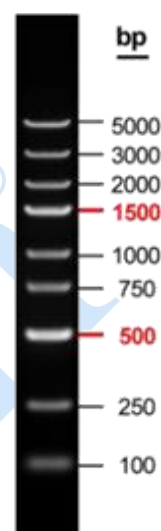
Store at 2-8°C (-20°C for long term storage)

Introduction:

The DNA Ladder consists of 9 individual chromatography-purified DNA fragments ranging in size from 100 bp to 5000 bp. The band at 500 bp and 1500bp are included for easy orientation. The ladder is stored in a 1xLoading Buffer, with dense bands that require high concentration gel and low voltage electrophoresis. It is suitable for accurately confirming the size of DNA fragments.

Usage method:

1. For DNA agarose gel electrophoresis, add 5 μ L of this product directly into an empty well on agarose gel and increase the sample size appropriately for wide adhesive holes.
2. Use 1.5-2.0% Agarose or 5% PAGE gel, voltage 4-10 v/cm, and 1xTAE buffer for electrophoresis. Replacing the electrophoresis buffer in time and using the fresh gel to achieve results.
3. Stain with EB or other nucleic acid dyes, and observe the electrophoretic bands under UV light.



5uL/lane, 1 x TAE buffer,
1.5% Agarose

Precautions

1. This product is already preserved in 1x Loading Buffer and can be directly used for electrophoresis
2. If ethidium bromide (EB), a strong carcinogen, is used for DNA electrophoresis, please take care to avoid the contamination of this product by EB during frequent uses. Pre-stained proteins have different apparent molecular weights in different buffer systems. If non pre stained proteins are calibrated in advance in this buffer system, the protein molecular weight can be roughly determined.
3. 5x Loading Buffer can be used for sample detection.

5x Loading Buffer: 10 mM Tris-HCl, 5 mM EDTA, pH 7.6, 0.03% bromophenol blue, 0.03% xylene cyanol FF, 30% glycerol